



U.S. FLOOR MASTERS

Manufacturer of the Clearest Grades and Perfect Grain



Chosen for the Helios
Super Yacht



The Finest Flooring in the World

Perfect Logs for Perfect Flooring

The trees that make unblemished wood flooring start life in a dense forest with a tall canopy. In their early years they do not produce many branches, instead they concentrate on growing higher in order to penetrate the canopy for sunlight. Perfect logs are rare, prized for their consistent color, tight grain patterns, uniformity of ring spacing and lack of blemishes.

When a forest is logged, there are three broad categories of log quality: prime grade logs, select grade (saw) logs and common (pallet) logs. The veneer industry will pay from 3 to 20 times the price that most wood floor manufacturers pay for the saw logs. U.S. Floor Masters is the only manufacturer that uses exclusively prime grade logs.

From these personally selected logs, we only use the logs in the midrange of the color spectrum for each species. Color inspection of our flooring starts from hand picking our logs from the forest and continues all the way through to the final inspection prior to shipping.

The usable section of the prime log starts just above the swell of the butt and continues up until the first defect is found (e.g. a healed-over branch). The swell of the log cannot be used, because the grain will deviate from being straight. Even after performing the most detailed inspection of the log there still can be small hidden defects which will severely diminish the yield of acceptable wood.

Only the thickest forest canopies promote the slow growth that is essential in producing the highest caliber lumber.

The center of the log cannot be utilized due to the inherent defects of the first years of growth. The center of a young tree will have many small branches creating defects. We also remove all the sapwood from the outside diameter of the log. The amount of sapwood is dependent on the species of tree, but also on the growing conditions. Faster growing trees with access to full sunlight will have more sapwood.

A 20-inch log will yield clear radial sawn boards as wide as 6 inches. The price of prime grade logs escalates dramatically as their diameter increases. Grain- and color-matched boards will provide a more uniform appearance than wider boards sawn from many logs. A random width floor will utilize the highest percentage of matching wood from the same log, decreasing the amount of logs needed, thus providing the most consistent look and value.



U.S. Floor Masters flooring is proud to be NWFA/NOFMA certified. This is the highest certification for a hardwood flooring manufacturer in the nation.

Only one tree in a thousand is perfect enough to be used in U.S. Floor Masters Flooring

U.S. Floor Masters is the only manufacturer in the world to exclusively use prime grade veneer quality logs.

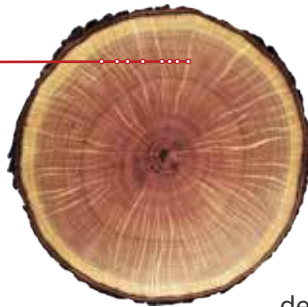
Quarter-Sawing Methods



In addition to yielding the greatest stability for any species of wood, quarter-sawing produces the tightest, most constant grain pattern.

Circular quarter-sawing produces the most prolific ray flecks possible from any log. This is accomplished by maintaining a near perfect vertical grain angle of 80° to 90°. Maintaining this strict tolerance yields the tightest and most consistent grain pattern in the industry.

Medullary rays (flecks) are cells extending radially within a tree and varying in height (thickness) from a few cells in some species to ¾" and more in white oak. The rays serve primarily to store food and transport it horizontally in the tree. On near vertical grained oak boards, the rays form a conspicuous figure, sometimes referred to as flecks.

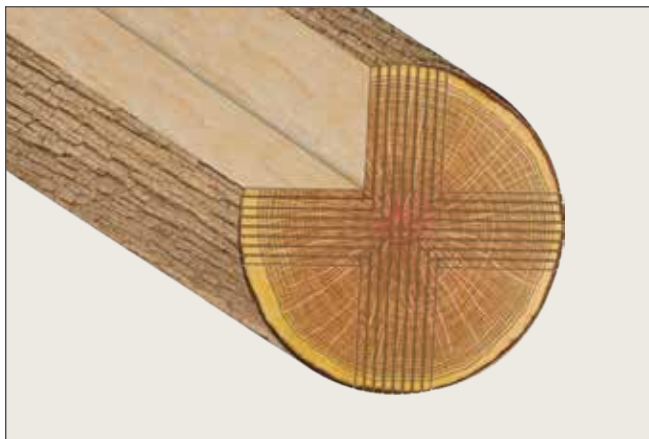


Wide "flecking" only occurs at grain angles exceeding 80 degrees. Grain angles lower than about 85 degrees result in narrow and diagonal flecks. At less than 75 degrees, the display is rift grain. Problems arise when trying to produce wide rift or wide quartered boards.

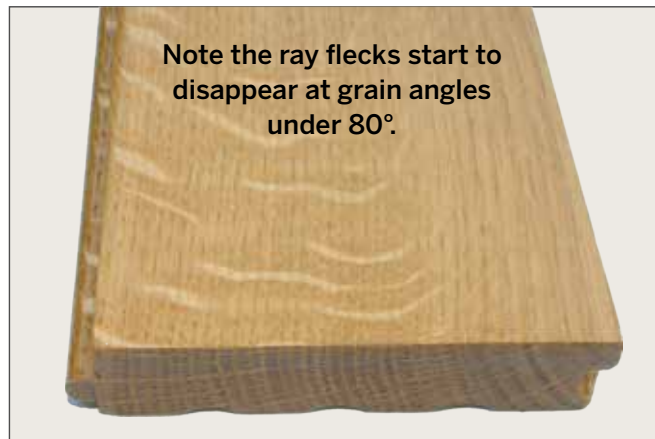
Perfect Quarter-Sawn with grain angles between 80° to 90° is not available from any other hardwood flooring manufacturer.

NOFMA/NWFA Standard: Quarter-sawn oak flooring must have at least 50% of the piece containing quartered characteristics which are defined by NOFMA as: In cross section the angle of the annual ring tangent to the face of the piece to be between 45° and 90°. Grain lines must be mostly parallel to the length of strips and medullary ray flecks present and more than 1/16" wide.

U.S. Floor Masters fully supports NOFMA/NWFA grain and grade rules for commodity graded products. We simply exceed the national standards in the flooring that we produce.



Other common Quarter-Sawing methods have lower quality quartered yield.



Note the ray flecks start to disappear at grain angles under 80°.

Conventional quarter-sawing produces grain angles between 45° and 90°.

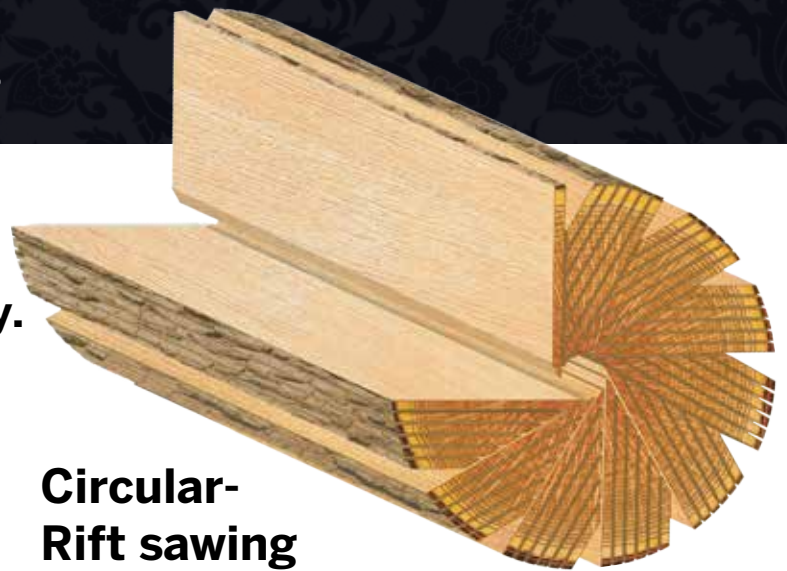
Rift-Sawing Methods

We're your rift experts. We invented circular rift technology.

Our proprietary circular-rift saw mill is the only one of its kind in the world. This method produces a larger quantity of near identical rift-grained boards from each log, creating a floor with a more uniform grain structure and color consistency across the width of wider boards.

Our rift-sawn oak flooring features the full face of every piece containing rift only characteristics. Rift characteristics, as defined by USFM, include the cross section angle of the annual ring tangent to the face of the piece to be between 30° and 80°; grain lines are to be parallel to the length of strips with medullary ray flecks less than 1/16" wide.

Our circular-rift sawn standard: every board from edge to edge features ideal rift grain.



Circular-Rift sawing produces higher quality rift flooring.

NOFMA/NWFA Standard: Rift-sawn oak flooring must have at least 75% of the piece containing rift characteristics. Rift characteristics as defined by NOFMA include the cross section angle of the annual ring tangent to the face of the piece to be between 30° to 60°, grain lines to be mostly parallel to the length of strips and medullary ray flecks less than 1/16" wide.

USFM rift-sawn flooring is available with grain angle of 45° to 80° for projects that require the tightest, most uniform grain structure possible. U.S. Floor Masters fully supports NOFMA/NWFA grain and grade rules for commodity graded products. As with our quarter-sawn product, we exceed the national standards for the flooring we produce.



Only the last few small boards in conventional sawing methods produce rift boards.

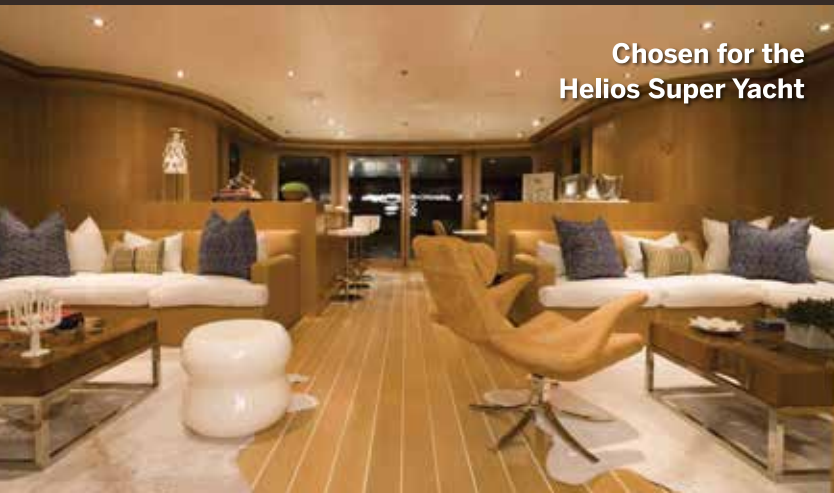
Quarter-Sawn White Oak

Our circular quarter-sawn grain white oak flooring starts from hand-selected prime grade veneer logs — a quality of log so high that it has never before been used in the wood flooring industry. We use only true *Quercus alba*, true “Northern White Oak”, not the commonly included species of Burr Oak, Chestnut Oak, Chinkapin Oak, Live Oak and Post Oak. From these logs, we only choose those in the midrange of the *Quercus alba* species color spectrum.

- Grade: Exceeds NWFA/ NOFMA’s Clear Standard
- 100% Heart Wood (sapwood removed)
- Vertical grain structure of 80 - 90°
- Ray flecks covering at least 80% of the surface of every board
- Long lengths: 30" to 12' lengths averaging over 5' per board (longer by request).
- Width: 4", 5" & 6" (special order widths available)
- 3/4" thickness, other thicknesses available (1/2", 5/8" & full 1" by use of other plywood thicknesses)
- Tongue & grooved, end matched & relief bottoms to NOFMA standards
- Moisture content of 7% to 9% unless otherwise specified
- Finish: Unfinished or optional pre-finishes (Hard Wax Oil or 100% solids UV cured Aluminum Oxide)
- Construction: Industry leading full 12-ply engineered construction featuring 15mm exterior grade, CARB compliant premium Russian Baltic Birch with a 4.5mm thick wear layer
- SK-8 Glue (designed for wooden skateboards)
- Cold Press clamping for a sure bond
- Edge Treatments: Square, microbevel (mini or micro) and rolled (rounded).

Circular quarter sawing yields the tightest, most consistent grain pattern and prolific ray fleck possible

Chosen for the
Helios Super Yacht



U.S. FLOOR MASTERS

Manufacturer of the
**Clearest Grades and
Perfect Grain**

Rift-Sawn White Oak

Our circular rift-sawn grain white oak flooring starts from hand selected prime grade veneer logs — a quality of log so high that it has never before been used in the wood flooring industry. We use only true *Quercus alba*, true “Northern White Oak”, not the commonly included species of Burr Oak, Chestnut Oak, Chinkapin Oak, Live Oak and Post Oak. From these logs, we only use those in the midrange of the *Quercus alba* species color spectrum.

- Grade: Exceeds NWFA/ NOFMA's Clear standard
- 100% Heart Wood (sapwood removed)
- Vertical grain structure of 30 - 80° (depending on log's medullary rays)
- Grade: Exceeds NWFA/ NOFMA's Rift-Sawn standard
- Long lengths: 30" to 12' lengths averaging over 5' per board (longer by request).
- Width: 4", 5" & 6" (special order widths available)
- 3/4" thickness, other thicknesses available (1/2", 5/8" & full 1" by use of other plywood thicknesses)
- Tongue & grooved, end matched & relief bottoms to NOFMA standards
- Moisture content of 7% to 9% unless otherwise specified
- Finish: Unfinished or optional pre-finishes (Hard Wax Oil or 100% solids UV cured Aluminum Oxide)
- Construction: Industry leading full 12-ply engineered construction featuring 15mm exterior grade, CARB compliant premium Russian Baltic Birch with a 4.5mm thick wear layer
- SK-8 Glue (designed for wooden skateboards)
- Cold Press clamping for a sure bond
- Edge Treatments: Square, microbevel (mini or micro) and rolled (rounded).

Circular rift-sawing yields the tightest and most consistent grain pattern



Chosen for the
headquarters of
Under Armour



U.S. FLOOR MASTERS

Manufacturer of the
**Clearest Grades and
Perfect Grain**

Quarter-Sawn Red Oak

Circular quarter-sawing yields the tightest, most consistent grain pattern and prolific ray fleck possible

Our Circular Quarter Sawn Red Oak Flooring starts from hand selected veneer grade logs — a quality of log so high that it has never before been used in the wood flooring industry. Of the 25 North American species of Red Oak, Quarter-Sawn Flooring's product is produced from only one, the true Northern Red Oak "Quercus Rubra". From these logs, we only use those in the midrange of the Quercus alba species color spectrum.

- Grade: Exceeds NWFA/ NOFMA's Clear
- 100% Heart Wood (sapwood removed)
- Grade: Exceeds NWFA/ NOFMA's Quarter-Sawn standard
- Vertical grain structure of 80 - 90°
- Ray flecks covering at least 80% of the surface of every board
- Long lengths: 30" to 12' lengths averaging over 5' per board (longer by request)
- Width: 4", 5" & 6" (special order widths available)
- 3/4" thickness, other thicknesses available (1/2", 5/8" & full 1" by use of other plywood thicknesses)
- Tongue & grooved, end matched & relief bottoms to NOFMA standards
- Moisture content of 7% to 9% unless otherwise specified
- Finish: Unfinished or optional pre-finishes (Hard Wax Oil or 100% solids UV cured Aluminum Oxide)
- Construction: Industry leading full 12-ply engineered construction featuring 15mm exterior grade, CARB compliant Premium Russian Baltic Birch with a 4.5mm thick wear layer
- SK-8 Glue (designed for wooden skateboards)
- Cold Press clamping for a sure bond
- Edge Treatments: Square, microbevel (mini or micro) and rolled (rounded)



U.S. FLOOR MASTERS

Manufacturer of the
**Clearest Grades and
Perfect Grain**

Rift-Sawn Red Oak

Our Circular Rift Sawn Red Oak Flooring starts from hand selected veneer grade logs — a quality of log so high that it has never before been used in the wood flooring industry. Of the 25 North American species of Red Oak, Quarter-Sawn Flooring's product is produced from only one, the true Northern Red Oak "Quercus Rubra". From these logs, we only use those in the midrange of the Quercus Rubra species color spectrum.

- Grade: Exceeds NWFA/ NOFMA's Clear standard
- 100% Heart Wood (sapwood removed)
- Vertical grain structure of 30 - 80° (depending on log's medullary rays)
- Grade: Exceeds NWFA/ NOFMA's Rift-Sawn standard
- Long lengths: 30" to 12' lengths averaging over 5' per board (longer by request)
- Width: 4", 5" & 6" (special order widths available)
- 3/4" thickness, other thicknesses available (1/2", 5/8" & full 1" by use of other plywood thicknesses)
- Tongue & grooved, end matched & relief bottoms to NOFMA standards
- Moisture content of 7% to 9% unless otherwise specified
- Finish: Unfinished or optional pre-finishes (Hard Wax Oil or 100% solids UV cured Aluminum Oxide)
- Construction: Industry leading full 12-ply engineered construction featuring 15mm exterior grade, CARB compliant Premium Russian Baltic Birch with a 4.5mm thick wear layer
- SK-8 Glue (designed for wooden skateboards)
- Cold Press clamping for a sure bond
- Edge Treatments: Square, microbevel (mini or micro) and rolled (rounded)

Circular quarter-sawing yields the tightest, most consistent grain pattern



U.S. FLOOR MASTERS

Manufacturer of the
**Clearest Grades and
Perfect Grain**

Quarter-Sawn American Black Cherry

Circular quarter-sawing yields the tightest and most consistent grain pattern



U.S. Floor Master's Circular Quarter-Sawn American Black Cherry Flooring starts from hand selected veneer grade logs — a quality of log so high that it has never before been used in the wood flooring industry. When Cherry is circular quarter-sawn you see a fantastic Chatoyance (sh-toi-uhahns NOUN - the property of changing in luster or color like a cat's eye).

- Grade: Exceeds NWFA/ NOFMA's Clear Standard
- 100% Heart Wood (sapwood removed)
- Vertical grain structure of 80 - 90°
- Long lengths: 30" to 12' lengths averaging over 5' per board (longer by request).
- Width: 3", 4" & 5" (special order widths available)
- 3/4" thickness, other thicknesses available (1/2", 5/8" & full 1" by use of other plywood thicknesses)
- Tongue & grooved, end matched & relief bottoms to NOFMA standards
- Moisture content of 7% to 9% unless otherwise specified
- Finish: Unfinished or optional pre-finishes (Hard Wax Oil or 100% solids UV cured Aluminum Oxide)
- Construction: Industry leading full 12-ply engineered construction featuring 15mm exterior grade, CARB compliant premium Russian Baltic Birch with a 4.5mm thick wear layer
- SK-8 Glue (used on wood skateboards)
- Cold Press clamping for a sure bond
- Edge Treatments: Square, microbevel (mini or micro) and rolled (rounded)



U.S. FLOOR MASTERS

Manufacturer of the
**Clearest Grades and
Perfect Grain**

Quarter-Sawn Hard Maple

Circular quarter-sawing yields the tightest and most consistent grain pattern

Our Circular Quarter-Sawn Hard Maple Flooring starts from hand selected veneer grade logs — a quality of log so high that it has never before been used in the wood flooring industry. Straight grain and clear, this hard maple features vertical grain structure of 80 – 90 degrees. A bright, almost white wood.

- Grade: Exceeds NWFA/ NOFMA's Clear standard
- All White Color (zero brown heartwood)
- Vertical grain structure of 80 - 90°
- Long lengths: 30" to 12' lengths averaging over 5' per board (longer by request)
- Width: 3", 4" & 5" (special order widths available)
- 3/4" thickness, other thicknesses available (1/2", 5/8"; & full 1" by use of other plywood thicknesses)
- Tongue & grooved, end matched & relief bottoms to NOFMA standards
- Moisture content of 7% to 9% unless otherwise specified
- Finish: Unfinished or optional prefinishes (Hard Wax Oil or 100% solids UV cured Aluminum Oxide)
- Construction: Industry leading full 12-ply engineered construction featuring 15mm exterior grade, CARB compliant Premium Russian Baltic Birch with a 4.5mm thick wear layer
- SK-8 Glue (designed for wooden skateboards)
- Cold Press clamping for a sure bond
- Edge Treatments: Square, microbevel (mini or micro) and rolled (rounded)



U.S. FLOOR MASTERS

Manufacturer of the
**Clearest Grades and
Perfect Grain**



Wide Plank American Black Walnut

Our Centered Cut Cathedral grain wide plank American Black Walnut Flooring starts from hand selected veneer grade logs — a quality of log so high that it has never before been used in the wood flooring industry. Our walnut is not steamed in order maintain the greatest quality of color in our flooring. We remove all sapwood leaving only the rich brown heart wood. We select smaller areas of “character” resulting in a more stable floor and a “centered cathedral” grain pattern, so that when you line up several boards, there is a consistency to our “planks” that other manufacturer’s wide plank walnut will not have.

- 100% Heart Wood (sapwood removed)
- Unsteamed natural walnut color
- Grade: 80% of board meets Clear grade. The very center of the board (center of log) will have defects requiring some filling
- Long lengths: 30" to 12' lengths averaging over 5' per board (longer by request)
- Width: 9" (special order widths available)
- 3/4" thickness
- Tongue & grooved, end matched & relief bottoms to NOFMA standards
- Moisture content of 7% to 9% unless otherwise specified
- Finish: Unfinished or optional pre-finishes (Hard Wax Oil or 100% solids UV cured Aluminum Oxide)
- Construction: Industry leading full 12-ply engineered construction featuring 15mm exterior grade, CARB compliant
- Edge Treatments: square, micro, quarter bevel, and rounded



U.S. FLOOR MASTERS

Manufacturer of the
**Clearest Grades and
Perfect Grain**



Quarter-Sawn American Black Walnut

U.S. Floor Masters, LLC
500 Alakawa Street
Honolulu, Hawaii 96817

Tel: +1-808-842-7100
Fax: +1-808-842-7177
Email: sales@wlflooring.com

U.S. Floor Master's Circular Quarter Sawn American Black Walnut Flooring starts from hand selected veneer grade logs — a quality of log so high that it has never before been used in the wood flooring industry. Our walnut is not steamed in order maintain the greatest quality of color in our flooring. We remove all sapwood leaving only the rich brown heart wood.

- Grade: Exceeds NWFA/ NOFMA's Clear Standard
- 100% Heart Wood (sapwood removed)
- Unsteamed natural walnut color
- Vertical grain structure of 80 - 90°
- Long lengths: 30" to 12' lengths averaging over 5' per board (longer by request).
- Width: 3", 4" & 5" (special order widths available)
- 3/4" thickness, other thicknesses available (1/2", 5/8" & full 1" by use of other plywood thicknesses)
- Tongue & grooved, end matched & relief bottoms to NOFMA standards
- Moisture content of 7% to 9% unless otherwise specified
- Finish: Unfinished or optional pre-finishes (Hard Wax Oil or 100% solids UV cured Aluminum Oxide)
- Construction: Industry leading full 12-ply engineered construction featuring 15mm exterior grade, CARB compliant premium Russian Baltic Birch with a 4.5mm thick wear layer
- SK-8 Glue (used on wood skateboards)
- Cold Press clamping for a sure bond
- Edge Treatments: Square, microbevel (mini or micro) and rolled (rounded)



U.S. FLOOR MASTERS

Manufacturer of the
**Clearest Grades and
Perfect Grain**